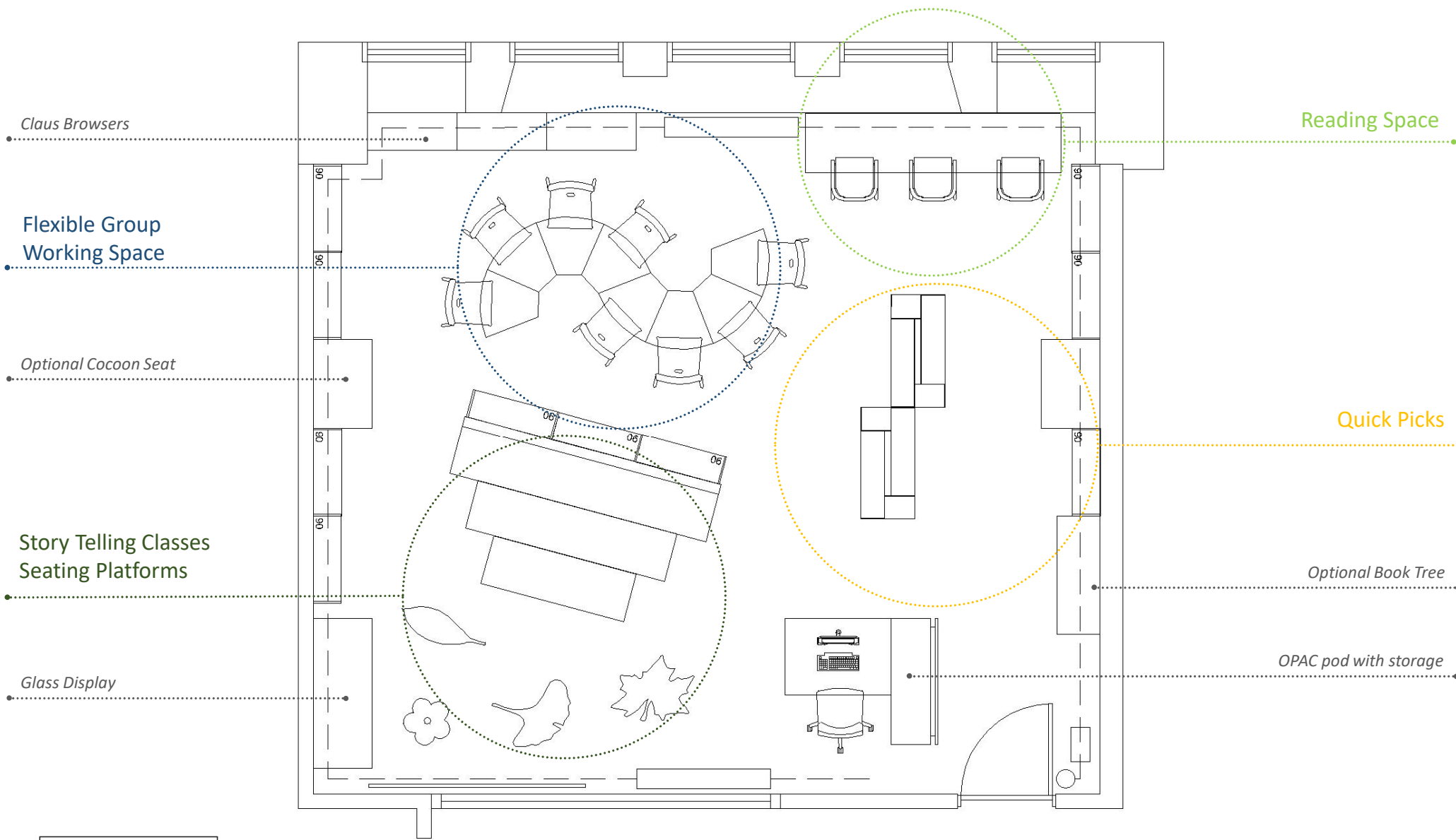


BROOMHILL PRIMARY SCHOOL Senior Library:
Interior Layout, Shelving, Furniture

Design proposal by

thedesignconcept







Welcome to the
Rohan Library



"When you **know** better, you **do** better"
Maya Angelou



ABERDEEN
CITY COUNCIL

thedesignconcept



Curobib
direct



Welcome to the
Rohan Library



ABERDEEN
CITY COUNCIL

thedesignconcept

BCI

Curobib
direct

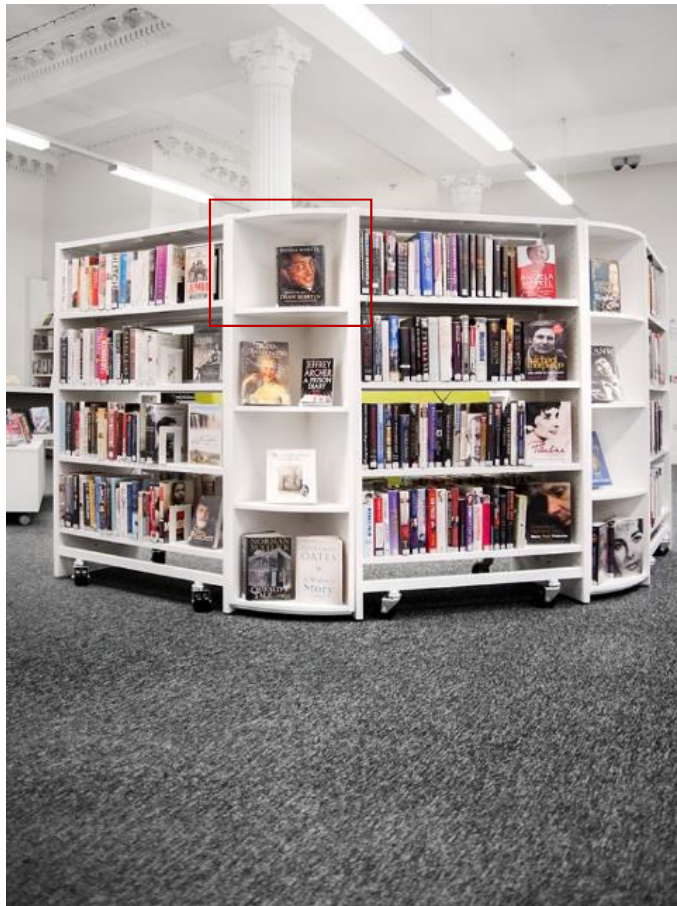
Welcome to the
Rohan Library



RATIO SHELVING

This shelving system encapsulates the true meaning of flexibility. Its modular construction provides the highest degree of functionality and versatility and its style; and quality makes it suitable for both contemporary and classic library environments.

The Ratio Wooden Shelving System is available single- or double-sided and can be fitted with metal or wooden shelves, as well as a wide variety of other functional components. The result – a customisable shelving systems that fits the requirements of your specific library.



RATIO SHELVING: product information

The Ratio Wooden Shelving System can be delivered in a wide range of finishes. See Design Options for further information.

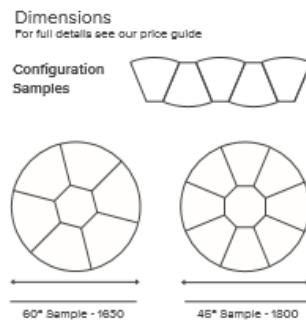
<h3>DIMENSIONS</h3> <ul style="list-style-type: none"> ■ Heights: 1096*/1512/1768/2056/2248 mm ■ Widths: 500/750/900/1000 mm ■ Depths: 250/300 mm <p>*H1096 mm is only available with back frame and back panel.</p>	<h3>PANELS</h3> <ul style="list-style-type: none"> ■ Standard end panel ■ Wooden functional end panel 	<h3>CONNECTION ELEMENTS</h3> <ul style="list-style-type: none"> ■ Traverse ■ Back frame ■ Back panel 	<h3>STANDARD STEEL COLOURS</h3> <p>PRICE GROUP A</p> <ul style="list-style-type: none"> Traffic white 916 (RAL 9016) Oyster white 113 (RAL 1013) Grey aluminium 907 (RAL 9007) Basalt grey 712 (RAL 7012) Light grey 735 (RAL 7035) <hr/> <p>PRICE GROUP B</p> <ul style="list-style-type: none"> Traffic yellow 123 (RAL 1023) Flame red 300 (RAL 3000) Gentian blue 510 (RAL 5010) Orange 203 (RAL 2003) Green N01 (NCS S1000-G101) Pigeon blue 514 (RAL 5014) White aluminium 906 (RAL 9104) Anthracite grey 716 (RAL 7016) Jet black 905 (RAL 9005) 		
<h3>SHELVES</h3> <ul style="list-style-type: none"> ■ Horizontal and sloping ■ Wood and steel ■ With and without backedge ■ With and without sign profile ■ With and without kick plate 	<h3>FUNCTIONS</h3> <ul style="list-style-type: none"> ■ Browsers ■ Display and storage ■ Pull-out shelves ■ Book supports ■ Signage ■ Doors (glass/wood) 	<h3>FUNCTIONS</h3> <p>for wooden functional end panels</p> <ul style="list-style-type: none"> ■ Wooden sign ■ Steel display shelf ■ Wooden folder rack 			
<h3>COLOURS</h3> <p>We have a standard range of powder coated RAL colours for steel parts. Other colours are available upon request.</p> <p>We have a standard range of colours for wooden surfaces, that are either veneer or melamine coated. Other colours and finishes are available upon request.</p>	<h3>CASTORS</h3> <p>Castors can be mounted on double-sided shelving.</p> <p>They are available as soft/hard and with/without brakes.</p>	<h3>DETAILS</h3> <p>See technical specifications on our website</p> <p>www.thedesignconcept.co.uk</p>			





Browsers & Features:







We would discuss this options of the product with you and provide full product drawings prior to manufacturing. These are available in a wide range of finishes and colours.

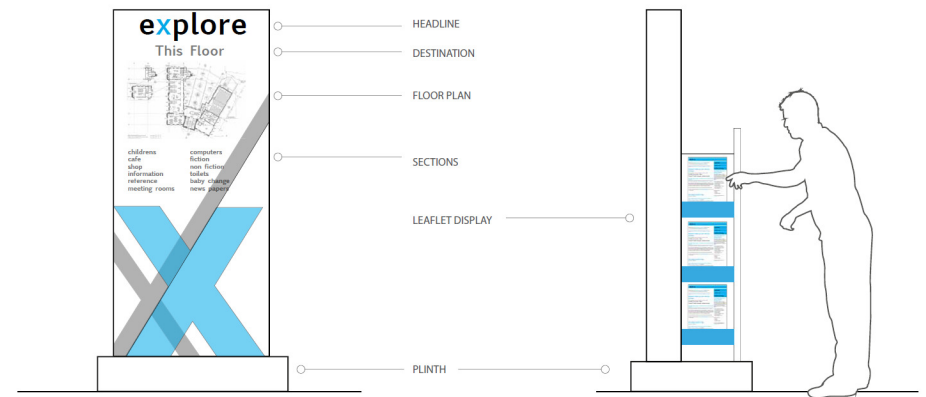
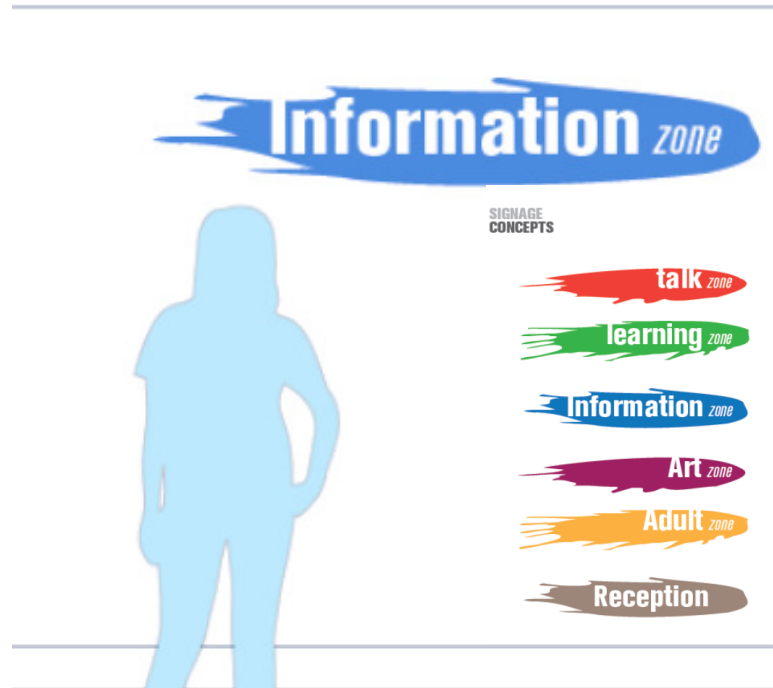


Seating Cocoons

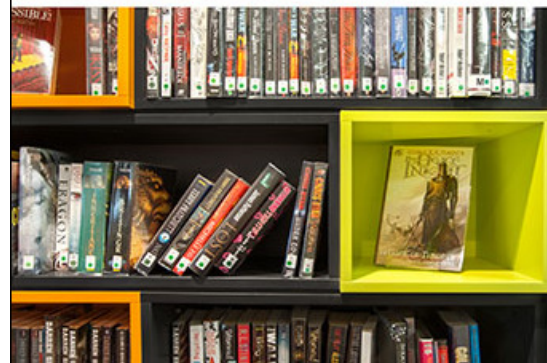


Wall Hung Book Tree

Examples of Graphics and Signage:



Examples of Graphics and Signage:



thedesignconcept

The Old Bakery
10 Greenlees Road
Cambuslang
Glasgow, G72 8JJ



ABERDEEN
CITY COUNCIL

thedesignconcept



Curobib
direct